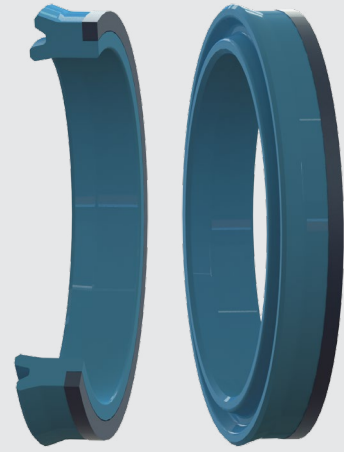


PISTON SEALS

BECA  
336/AE



DESCRIPTION

The BECA 336/AE profile is a U-ring type single acting piston seal with offset lips composed of a polyurethane profile ring and a POM back-up ring on the back.

ADVANTAGES

Optimised sealing effect at both high and low pressures

Excellent abrasion and wear resistance

Excellent extrusion resistance

APPLICATIONS

Mobile hydraulics

Injection presses

Machine tools

Presses

Hydraulic cylinders

MATERIALS

Profiled seal

PU 93 Shore A - Blue

PU 96 Shore A - Blue

High temp. PU 96 Shore A - Beige

Back-up ring

Polyoxymethylene - POM

Other grades of materials are available. Please contact our experts.

TECHNICAL DATA

Temperature	-30°C / +110°C
Pressure	50 MPa
Speed	0.5 m/sec
Media	Mineral hydraulic oils

The figures above indicate the maximum values and may not be cumulated. They may be developed, depending on the materials used.

EXTRUSION GAPS

Bore diameter ØD1	Radial extrusion gap F/2					
	≤ 5 MPa	≤ 10 MPa	≤ 20 MPa	≤ 30 MPa	≤ 40 MPa	≤ 50 MPa
≤ 60 mm	0.40	0.30	0.20	0.15	0.10	0.07
> 60 mm	0.50	0.40	0.30	0.20	0.15	0.10

SURFACE ROUGHNESS

Roughness	Dynamic surface area	Static surface area	Groove flanks
Ra	0.1 - 0.4 µm	≤1.6 µm	≤3.2 µm
Rz	0.63 - 2.5 µm	≤6.3 µm	≤10.0 µm
Rmax	1.0 - 4.0 µm	≤10.0 µm	≤16.0 µm

CHAMFERS AND RADIUS

Radial section S	Radius R1	Radius R2	Chamfer C
3.00	0.20	0.40	2.00
4.00	0.20	0.40	2.50
5.00	0.40	0.60	3.00
7.50	0.80	1.00	4.00
10.00	0.80	1.00	5.00

